

# SPIRAL<sup>®</sup> FV

HIGH PERFORMANCE RIGID ROLLING DOOR

## Ultra High Speed, Security and Full Vision - All in One Door.

Take one look at the Spiral FV door in action and it makes an immediate impression. With an ultra-high opening speed of up to 100 inches per second, it's extremely fast. Yet for all that speed, its unique Spiral technology keeps it whisper-quiet. And its top-to-bottom full-width window slats give it an extra measure of safety at the threshold. Not to mention a sharp, high-tech look. All of which promote an enviable image of cutting-edge operations.

For modern production and commercial environments with high traffic, the Spiral FV will take your facility's look and efficiency to a higher plain.

**Fast** - With an opening speed of up to 100 inches per second, the Spiral FV improves traffic flow in fast-paced production and warehousing environments.

**Whisper Quiet** - With no metal-to-metal contact, the advanced Spiral technology offers whisper-quiet operation.

**Safe** - The top-to-bottom, full-width window slats, dual electric photo eyes and reversing edge in the bottom bar provide full visibility and added safety at the door's threshold.

**Smooth Operation** - The System 3<sup>®</sup> variable frequency drive provides ultra-smooth operation with soft acceleration and deceleration. And its dynamic braking virtually eliminates the need for brake adjustments and reduces brake wear.

**Energy Efficient and Tight Seal** - Polycarbonate window slats, along with a durable rubber membrane covering the aluminum connecting hinges, provide a 100% seal against dust pollution, drafts, and inclement weather.



**RYTEC**  
CORPORATION

Driving The Door Industry.<sup>SM</sup>

# SPIRAL® FV

HIGH PERFORMANCE RIGID ROLLING DOOR

**Specifications:** Subject to change

**Model:** Rytec® Spiral® FV Door

**Standard Size:** Up to 26 feet 2 inches wide by 25 feet 7 inches high.

**Door Panel:** Aluminum slat frames with clear polycarbonate windows are 9 inches high by 1-3/16 inches thick. Integral rubber weatherseal between each of the panels.

**Side Frames:** Galvanized steel side frames with full-height weatherseal on both sides to seal against door panel. Dual electric photo eyes are standard. Optional stainless steel package available.

**Counterbalance:** Up to three extension springs in each side column, depending on the size of the door. The springs assist the motor in opening the door. Mechanical egress lever on side column allows door to be opened in the event of a power failure.

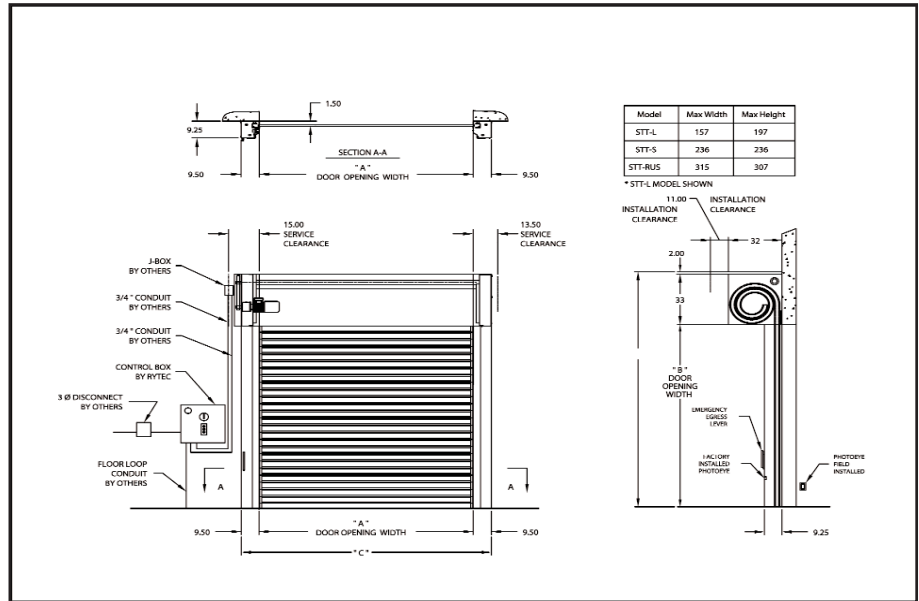
**Bottom Bar:** Extruded aluminum bottom bar with control-reliable, electric reversing edge.

**Drive System:** Three-phase, variable speed AC Drive provides soft acceleration and deceleration. Independent opening and closing speeds provide flexibility to accommodate any application.

**Electrical Controls:** System 3 controller is housed in a NEMA 4 rated enclosure with factory set parameters. Self-diagnostic features and a two-line, 32-character LCD display in English, Spanish or French provide quick and straightforward installation and control adjustments. Programmable inputs and outputs accommodate special control requirements without the need for additional electrical components.

**Travel Speed:** Opens at up to 100 inches per second.

**Warranty:** One year limited warranty on materials and workmanship.



### ▲ Slat Construction and Visibility

Clear polycarbonate windows maintain the security of a rigid door, while providing full-height, full-width visibility for added safety and room-to-room sharing of ambient light.



### ◀ Compact Motor

AC Drive motor is compact and variable speed, with soft acceleration and deceleration for smooth starts and stops.

▲ **Spiral Construction**  
 Patented Spiral track and rollers permit quiet and low maintenance operations.



### ▲ System 3 Controller

Makes programming and troubleshooting easier, more flexible and more precise than ever.



One Cedar Parkway  
 Jackson, WI 53037-0403  
 Phone: 262-677-9046  
 Fax: 262-677-2058  
 Toll Free: 888-GO-RYTEC  
 Email: info@rytecdoors.com  
 Web: www.rytecdoors.com